

FLOOR INSTALLATION

ResCom® flooring sheets have the same impressive fire properties as the wall sheets. When combined with ResCom® ceiling sheets, the floor structure can be protected from the effects of fire. The normal floor sheet thicknesses start at 18mm, and can range up to 50mm for special applications. The floor joist frame is to be appropriately designed and must not be less than that of the tested system. Much like the wall system, the floor system is to include ResCom sheet on either side of the joists. A guide to the compliance is detailed below.

FRL Floor Rating	Floor Sheet	FRL Ceiling Rating	Ceiling
90 min	14mm	60 min	10mm
120 min	18mm	90 min	10mm
150 min	20mm	120 min	12mm
180 min	25mm	180 min	14mm

Ensure minimum class 3 to 5 non-corrosive fasteners are used for interior use. Exterior Application and wet areas use minimum SPAK 304 or 316 Stainless Steel fixings. For fire rated flooring systems all joints and junctions must be filled with appropriate FR/FRL rated caulking compounds. Immediately upon installation of the ResCom® Flooring it is a mandatory requirement to protect the flooring board from inclement weather and exposure to rain or water by way of sealing with LOXON® Concrete & Masonry Primer, Interior/Exterior Latex or similar or cover with waterproof tarps until weather clears. Dry with air blower if wet.

Fastener clearance, screw must adhere to the following guidelines:

- 12mm minimum from square edge joints
- 25mm minimum from T & G or shiplap joints
- 50mm minimum from all corners
- 200mm maximum centres along joists and blocking

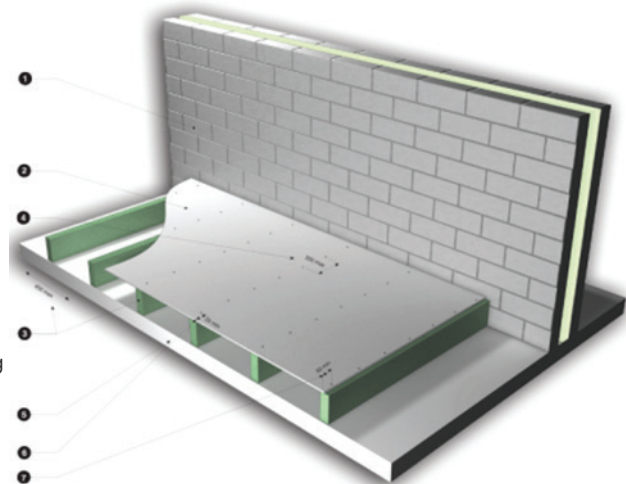


Figure 4

	Joist Centres	1.5kPa/ 1.8kN	2.0kPa/ 1.8kN	3.0kPa/ 2.7kN	5.0kPa/ 4.5kN
16mm	400mm	✓			
18mm	400mm	✓	✓		
18mm	450mm	✓	✓		
19mm	450mm	✓	✓		
20mm	450mm	✓	✓	✓	
20mm	600mm	✓	✓	✓	

1. Solid Wall
2. One layer on ResCom® Board
3. Floor joists at 600mm max centres
4. Screws will be No.8 x 40 self-drilling countersinking type fixed at max 200mm centres, and will not finish at approx. 0.5mm below surface
5. Floor concrete slab or on joists
6. Screws are 15mm from edge of shiplap joint
7. On sheet corners, keep the first screws 50mm from the edge to avoid breakage. Rest of fasteners at 12 to 15mm from sheet edges.
8. Support joints of board between spans with noggings
9. Assure at all times engineering has allowed for variation of joist spans for point and live loads

SPAN & LOADING GUIDELINES

ResCom® flooring is suitable for Categories A or B Class 5 conditions. Tests undertaken in accordance with clause 8.2 of AS/NZS 2908.2:2000. When tested in accordance with AS/NZS 2908.2 2000 Sections 8.2.1 'Bending Strength' and 8.2.2 'Soak Dry' ResCom® flooring demonstrated no denotable decrease to its strength and performance.

NOTE: It is advised that the elements of flooring design and construction must comply with the requirements of the BCA and or any other applicable local authorities building and construction regulations and standards. The design engineers and certifiers are responsible to ensure that the details in this document are appropriate for the intended application. Flooring should on installation be immediately sealed and protected from the inclement weather. In the event of the threat of storm and rain before sealing. The board must be covered to protect from water. If the board gets wet dry using a blower and allow to thoroughly dry out before covering or tiling.

CEILING INSTALLATION

ResCom® ceiling sheet thicknesses have been tabulated for 60 to 180 minute applications in the "Floors" section above. To minimise joint movement, and reduce the transfer of sound, it is recommended to always fix to metal ceiling battens. When additional acoustic isolation is required, resilient mounts are used to fix the battens.

ResCom® ceiling sheets are installed as per the wall sheets on fire separation walls. Refer to the section on "Walls" above.

Ceilings are often a cause of flanking noise between adjacent dwellings. Separation walls will often continue to the underside of the roof, with full acoustic insulation present to reduce flanking sound. Care should be taken to seal all gaps, especially where walls and ceilings meet. Use an approved fire rated polyurethane sealant.

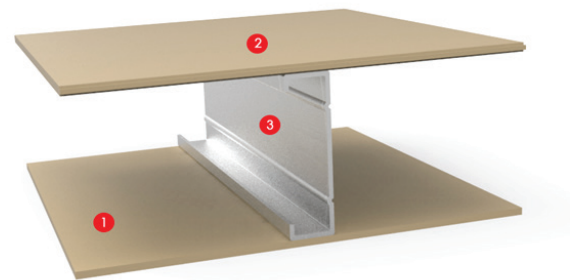


Figure 5-Floor & Ceiling Detail

Example Floor, Ceiling and Wall Configuration

Figure 5 -

1. ResCom® Ceiling Board
2. ResCom® Floor Board
3. Metal or timber joist as specified

